

*Redeemed for Life*

**How Can I Get Involved?**

Sign Up for EMAIL Alerts

Support Pro-Life Candidates

Educate Neighbors, Friends and Families

Write Letters to Newspapers

Call Your Representatives:

To Oppose US HR 810: A bill to amend the Public Health Service Act using tax payers funds for Embryonic Stem Cell Research

**Who Are My Representatives?**

Texas Representative: Dianne Delisi

774-9888 (Temple)

Texas Senator: Troy Fraser

939-3562 (Belton)

US Representative: John Carter

933-1393 (Belton)

US Senator: John Cornyn

512-469-6034

US Senator: Bailey Hutchinson

*Redeemed for Life*

122 N. Penelope St. Belton, Texas 76513 (254)933-8416 (office) (254)933-8414 (fax) www.redeemedforlife.com

**Redeemed for Life** is a Christ-centered pro-life/abortion recovery resource center offering:

- Crisis Pregnancy Intervention and Referral Services
- Abortion Recovery Counseling
- Faith-based Counseling for Individuals and Families
- Pro-life Activism
- Pro-life Speaking Engagements
- Pro-life Debates
- Training: Abortion Recovery Counseling, Effective Media Presentation and Activism
- Cooperation with Like-minded Institutions
- Bookstore and Resource Center

**Adult Stem Cell  
vs.  
Embryonic Stem  
Cell Research**



*Redeemed for Life*

122 North Penelope

Belton Texas 76513

1-866-426-5875

254-933-8416

[www.redeemedforlife.com](http://www.redeemedforlife.com)

# Adult Stem Cell vs. Embryonic Stem Cell Research

## Where Do Adult Stem Cells Come From?

- 1) Umbilical cords, placentas
- 2) Adult tissues such as bone marrow, liver, skin, intestine, brain and even fat,
- 3) and rarely, human brains up to 20 hours after death.

Frazier O'Brien, Nancy. [Stem cell basics](#). 18 Mar. 2005. Tidings Online. 10 Aug. 2005. <<http://www.the-tidings.com/2005/0318/stembasic>.

## Adult Stem Cell Use for Treatments for Diseases and Injuries

Ovarian Cancer    Skin Cancer (MCC)  
Breast Cancer    Testicular Cancer  
Multiple Sclerosis    Crohn's Disease  
Juvenile Arthritis    Heart Damage  
Parkinson's Disease    Spinal Cord Injury  
Sickle Cell Anemia    Osteoporosis  
Brain Cancer    Rheumatoid Arthritis

Plus 50 more diseases and injuries.

Fact Sheet [Do No Harm](#). 19 Jul. 2005. 6 August 2005. <<http://www.stemcellresearch.org/facts/treatments>.

## Stem Cells are the Basic Building Blocks of the Human Body

### Adult:

A cell that repairs existing cells that wear out or are destroyed. Effective today in the treatment of 65 injuries and/or diseases.

### Embryonic:

A cell that has the potential to develop into 200 or more distinct cell types  
But...at the cost of a human life!!

Gordon, Carrie Earll. [Frequently Asked Questions: Stem Cell Research](#). 10 Dec. 2004. CitizenLink Focus on Social Issues. Bioethics/Sanctity of Human Life FAQs. 6 August 2005. <<http://www.family.org/forum/foi/bioethics/faqs/a027980.cfm>

## The Church Should Support:

Adult stem cells that are derived from the patient's own cells, or from cells retrieved from donor umbilical cord, blood or placenta cells.

## The Church Should Oppose:

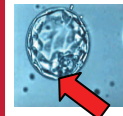
The use of human embryo's for embryonic stem cell research and oppose tax payer funding of such research. Destroying living embryos 5-7 days after their creation is morally unacceptable, because it involves the killing of a unique individual.

## Where Do Embryonic Stem Cells Come From?

For research purposes, embryos are created in a lab environment by injecting (donor) sperm into the (donor) egg (some embryos have been donated for research). *(At the moment of fertilization we become a unique human being. All the genetic information is there and the process of the development of that human life begins.)*



Alvuf Charlene PhD. Injected oocyte. 6 August 2005.



Between 5 and 7 days after fertilization the blastocyst is destroyed by removing the cell mass. In other words, a human being has just been killed.

Yava, Yalcin, PhD. [Blastocyst on Day 5](#). 6 Aug. 2005.

The inner cell mass is then separated into individual cells that are placed into petrie dishes to grow and develop for 6 months. During the growth and development process some cells can be distinguished as the cell of a human part or organ such as ears, a nose or a heart, while other cells remain unidentifiable. These unidentifiable cells are then used for research. From <http://www.ivf.net>

## Embryonic Stem Cell Use for Treatment for Diseases and Injuries

1. Never used to treat a human patient
2. Causes tumor formation in animals
3. Causes tissue rejection in animals
4. Causes genetic instability in animals

Frazier O'Brien, Nancy. [Stem cell basics](#). 18 Mar. 2005. Tidings Online. 10 Aug. 2005.

Swenson, Jean. [Stem Cell Tales of Hope and Hype](#). 8 Jul. 2005. townhall.com. 10 Aug. 2005.